

T H E S U L L A I R

185H

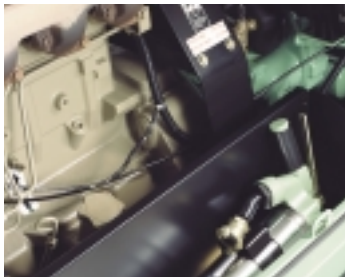
PORTABLE AIR COMPRESSOR

185 CFM AT 150 PSIG—87 L/S AT 10 BAR



- ROTARY SCREW COMPRESSOR
- REMOVABLE MODULAR CANOPY
- ADJUSTABLE HEIGHT HITCH
- E-Z LUBE AXLE
- LARGE TOOL BOX COMPARTMENT
- CURBSIDE INSTRUMENT PANEL
- SSAM—SHUTDOWN SYSTEM & ANNUNCIATION MODULE
- PROTECTIVE SHUTDOWN SWITCHES
- IDLE WARM-UP VALVE
- ROCKER TYPE START SWITCH
- FUEL/WATER SEPARATOR
- TWO STAGE AIR FILTERS
- 0 TO 100% CAPACITY CONTROL
- PNEUMATIC INLET VALVE
- AWF COMPRESSOR FLUID
- DURABLE POWDER COAT FINISH
- WIDE TRACK
- BUMPER WITH RECESSED TAIL LIGHTS





Large Tool Box Compartment
Sullair pneumatic tool sold separately.



E-Z Lube Axle
Offers convenient wheel bearing lubrication thru zerk fittings.



Rotary Screw Compressor
Single-stage, fluid flooded. Cast iron housing is dimensionally stable, thick-walled and machined to close tolerances.



Rear Bumper
Features recessed tail lights and license plate light.

DESIGNED FOR TOTAL ACCESSIBILITY AND RELIABILITY

Rotary Screw Compressor

Modular design reduces replacement costs. Exposed, single point lifting bail.

Rocker type engine start switch. Idle warm-up switch.

Ample Service Doors

Large side doors provide access to fuel tank, engine, compressor and tool compartment.

Service doors feature non-rusting hinges, with built-in weather strip and stainless steel T-type door retainers.

Rear service panel provides access to side by side compressor fluid cooler and engine radiator.

Serviceable components within easy reach. Routine maintenance is simplified. Reduced downtime and service cost.

Modular Canopy and Frame

Canopy easily removed in one piece for major service.

0 to 100% Capacity Control
Pneumatic inlet valve and unloaded starting.

Highway Towable Running Gear

3" square drawbar. Adjustable height hitch (14", 16", 18"). Quick-change hitch. Screw jack with pad. Transport security chains. E-Z lube axle lubrication. Heavy duty leaf spring suspension. Wide track stability.

Curbside Instrument Panel

Hinged, padlockable cover. Mechanical air pressure gauge and hourmeter.

High/Low Pressure Selector Switch
Allows dual pressure capability without making mechanical adjustments.

SSAM—Shutdown System & Annunciation Module*

Shutdown with annunciator light for high compressor temperature, high engine coolant temperature, low engine oil pressure and engine underspeed.

*Patent Pending

Durable, Baked-on Powder Coat Finish

Two-Stage Dry Type Air Filters

Separate filters for engine and compressor.

AWF Compressor Fluid

All-weather, all-climate fluid.

Air End Warranty

2 year standard warranty. 5 year or 10,000 hour warranty when continuously serviced at the recommended intervals with Sullair AWF Compressor Fluid and filters.

Quiet Operation

Meets US EPA Sound requirements of 76dBA @ 7 meters.



This product is manufactured to the highest quality standards in an ISO 9001 certified quality system.

SULLAIR'S OPTIONS ALLOW YOU TO CUSTOMIZE THE COMPRESSOR TO MEET YOUR SPECIFIC REQUIREMENTS WITHOUT PAYING FOR ITEMS YOU DO NOT NEED.

Special paint
Hose reels, single and dual
Spark arrestor
Ether start
Fuel level gauge
Gauge package

Tachometer
Brakes (Recommended where required by law.)
Mechanical parking brakes
Block heater
Ball hitch

Retractable pneumatic swivel third wheel
Air filter safety elements
Air filter maintenance indicators
Low fuel shutdown



SPECIFICATIONS, WEIGHTS AND DIMENSIONS—SULLAIR 185H PORTABLE COMPRESSOR

Delivery @ Rated Pressure	Rated Pressure psig bar	Pressure Range psig bar	Designated Model	Weight (wet) lbs kg	Weight (dry) lbs kg	Length (drawbar) in mm	Length (canopy) in mm	Width in mm	Height in mm	Track Width in mm	Tire Size (load range)
185 cfm 87 L/S 5.2 m ³ /min	150 10	80–150 5.5–10	2-Wheel	2580 1170	2405 1091	132.8 3373	83.1 2110	65.4 1661	61 1549	55 1397	F 78 x 15 (C)
			Less Running Gear	2325 1055	2150 975	— —	83.1 2110	47.2 1199	50.5 1283	— —	— —
Engine Make	Engine Type	Engine Model	Displacement cu in cc	Cylinders	Bore and Stroke in mm	Rated Speed rpm	Rated Power hp kW				
John Deere	Diesel	4045	276 4523	4	4.19 X 5.00 106 X 127	2200	78 58				
Caterpillar	Diesel	3054B	258 4200	4	4.055 X 5.00 103 X 127	2200	82 61				



www.sullair.com

SULLAIR CORPORATION, 3700 East Michigan Blvd., Michigan City, IN 46360 Telephone: 1-800-SULLAIR or 1-219-879-5451 Fax: 1-219-874-1504

SULLAIR EUROPE, Zone des Granges, BP 82, 42602 Montbrison, Cedex, France, Telephone: (33) 4.77.96.84.70 Fax: (33) 4.77.96.84.99

SULLAIR ASIA LTD., 74 Joo Koon Circle, Jurong, Singapore 629093, Telephone: (65) 861-1211 Fax: (65) 861-2967 Telex RS25117

SULLAIR ASIA, 1 Sullair Road, Chiwan, Shenzhen, China 518068, Telephone: (86) 755-6853477 or (86) 755-6851686 Fax: (86) 755-6853473

SULLAIR TAIWAN LTD., 3F-1., No.248, Chung Shan Road, Lin-Kou Hsiang, Taipei Hsien, Telephone: (02)2601-3500, Fax: (02)2601-3032

SULLAIR ARGENTINA, Goncalves Dias 1145, 1276 Buenos Aires, Argentina, Telephone: 541-303-0621, Fax: 541-303-0626

SSL-1087D Specifications subject to change without notice. © Copyright 2002 Sullair Corporation. All rights reserved. EA/09/02/2.5