

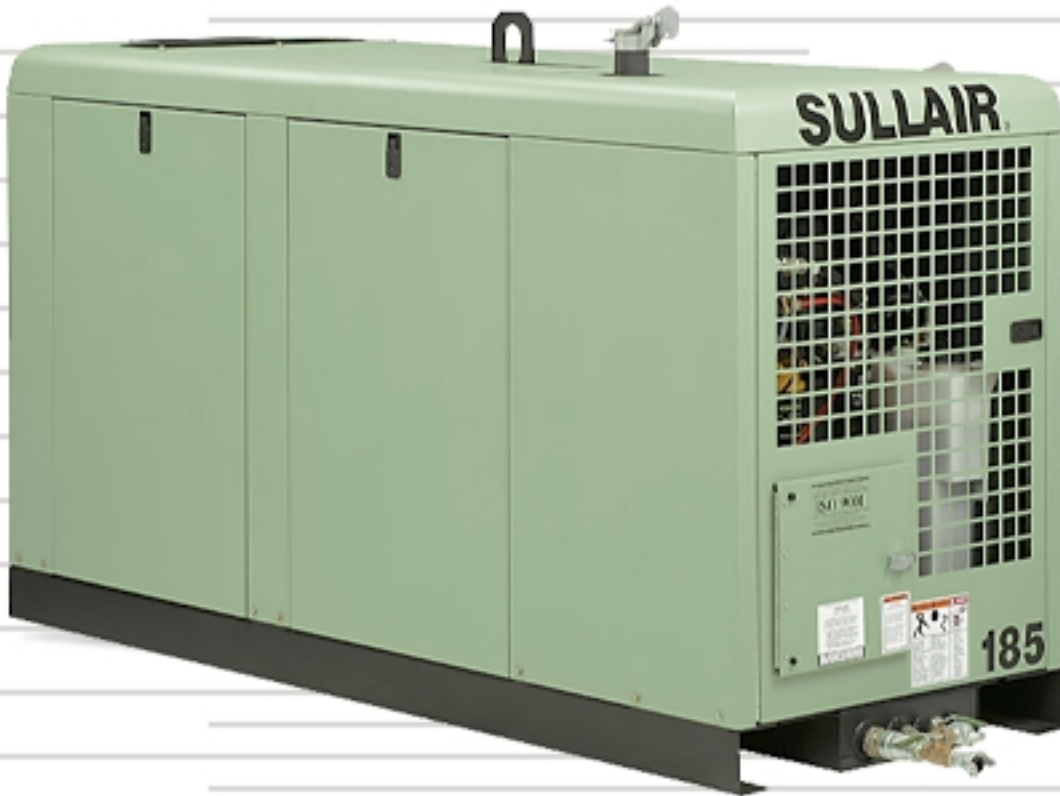
THE SULLAIR 185/210H/260

UTILITY AIR COMPRESSORS

185 CFM AT 100 PSIG—87 L/S AT 7 BAR

210 CFM AT 150 PSIG—99 L/S AT 10 BAR

260 CFM AT 100 PSIG—123 L/S AT 7 BAR

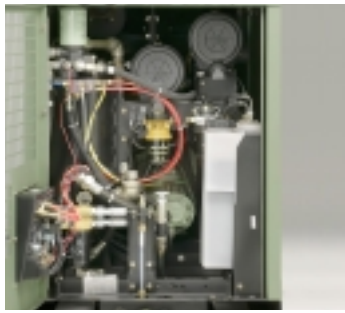


- ROTARY SCREW COMPRESSOR
- TOTALLY ACCESSIBLE FOR SERVICE
- CURBSIDE INSTRUMENT PANEL
- SSAM-SHUTDOWN SYSTEM AND ANNUNCIATOR MODULE
- IDLE WARM-UP VALVE
- PROTECTIVE SHUTDOWN SWITCHES
- TWO-STAGE AIR FILTERS
- 0 TO 100% CAPACITY CONTROL
- PNEUMATIC INLET VALVE
- AWF COMPRESSOR FLUID
- FORK LIFT POCKETS
- REMOTE COMPRESSOR FLUID DRAIN
- REMOTE ENGINE OIL DRAIN
- REMOTE ENGINE COOLANT DRAIN
- CORROSION RESISTANT ENCLOSURE
- GALVANNEAL SHEET METAL
- LOW EMISSION ENGINE TECHNOLOGY





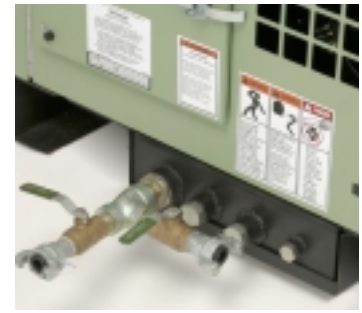
Curbside Instrument Panel
Hinged, padlockable door.



Curbside door provides complete access to all servicable components for periodic routine maintenance.



Rotary Screw Compressor
Single-stage, fluid flooded. Cast iron housing is dimensionally stable, thick-walled and machined to close tolerances.



Fluid plugs are conveniently grouped and located curbside for draining compressor fluid, engine oil and engine coolant.

DESIGNED FOR TOTAL ACCESSIBILITY AND RELIABILITY

Compact Package

Designed for cross-mounting on utility-type trucks

Fork lift pockets and exposed single point lifting bail facilitate installation and maintenance, easily removed from truck

Total Accessibility

All normal service items accessible through a curbside door and include: compressor and engine lubricant filters, fuel filters, compressor and engine air filters, compressor and engine sight glasses, compressor and engine oil fills, fuel fill

Remote Fluid Drains

Curbside O-Ring Plug fittings are provided for

draining compressor lubricant, engine oil and engine coolant

0 to 100% Capacity Control

Pneumatic inlet valve and unloaded starting
Color-coded control line

Curbside Instrument Panel

Hinged, padlockable cover
Air pressure gauge, hourmeter, voltmeter, engine oil pressure gauge, engine coolant temperature gauge, compressor discharge temperature gauge
Rocker-type ignition switch
Idle warm-up valve
Glow plug starting aid
High-Low pressure selector valve (210H)

SSAM—Shutdown System and Annunciator Module

Shutdown with annunciator light for high compressor temperature, high engine coolant temperature, low engine oil pressure, and engine underspeed

Low Emission Engine Technology

Engine complies with Tier 2 and Stage 2 emission legislation

Corrosion Resistant Enclosure

Galvanneal exterior sheet metal
Plated fittings and hardware
Aluminum instrument panel door
Durable baked-on powder coat paint finish

Two-Stage Dry Type Air Filters

Separate filters for engine and compressor

Dual Fuel Filtration System

Primary fuel/water separator with transparent bowl and water drain
Final filter with drain

AWF Compressor Fluid

All-weather, all-climate fluid

Quiet Operation

Meets US EPA Sound requirements of 76dBA @ 7 meters

Air-end Warranty

5 year or 10,000 hour warranty when continuously serviced at the recommended intervals with Sullair AWF Compressor Fluid and Filters.

2-Year standard warranty

SULLAIR'S OPTIONS ALLOW YOU TO CUSTOMIZE THE COMPRESSOR TO MEET YOUR SPECIFIC REQUIREMENTS WITHOUT PAYING FOR ITEMS YOU DO NOT NEED.

Special point
Spark arrestor muffler
Illuminated instrument panel

Fuel level gauge
Tachometer

Air filter maintenance indicators
Block heater

Auxiliary PTO Drive (210H and 260)
Low fuel shutdown

SPECIFICATIONS, WEIGHTS AND DIMENSIONS—SULLAIR UTILITY COMPRESSORS

Model	185DUQ	210H DUQ	260DUQ
Capacity			
Delivery	185 cfm @ 100 psig 87 L/S @ 7 bar - 5.2 m ³ /min @ 7 bar	210 cfm @ 150 psig 99 L/S @ 10 bar - 5.9 m ³ /min @ 10 bar	260 cfm @ 100 psig 123 L/S @ 7 bar - 7.4 m ³ /min @ 7 bar
Engine			
Type	Diesel	Diesel	Diesel
Make	John Deere	John Deere	John Deere
Model	4024T	5030T	5030T
Displacement	149 cu in (2443 cc)	186 cu in (3049 cc)	186 cu in (3049 cc)
Cylinders	4	5	5
Bore x stroke	3.39 x 4.13 in (86 x 105 mm)	3.39 x 4.13 in (86 x 105 mm)	3.39 x 4.13 in (86 x 105 mm)
Rated Speed	2800 rpm	2500 rpm	2500 rpm
Rated Power	60 hp (45 kW)	84 hp (63 kW)	84 hp (63 kW)
Weight			
Dry	1795 lbs (814 kg)	1925 lbs (873 kg)	2140 lbs (971 kg)
Wet	1965 lbs (891 kg)	2095 lbs (950 kg)	2310 lbs (1048 kg)
Dimensions			
Length	84 in (2134 mm)	84 in (2134 mm)	84 in (2134 mm)
Height (top of canopy)	47 in (1194 mm)	47 in (1194 mm)	47 in (1194 mm)
Height (over muffler)	51 in (1296 mm)	51 in (1296 mm)	51 in (1296 mm)
Width	33.5 in (851 mm)	33.5 in (851 mm)	33.5 in (851 mm)



www.sullair.com

SULLAIR CORPORATION, 3700 East Michigan Blvd., Michigan City, IN 46360 Telephone: 1-800-SULLAIR or 1-219-879-5451 Fax: 1-219-874-1504

SULLAIR EUROPE S.A., Zone des Granges, BP 82, 42602 Montbrison, Cedex, France, Telephone: (33) 4.77.96.84.70 Fax: (33) 4.77.96.84.99

SULLAIR ASIA LTD., 74 Joo Koon Circle, Jurong, Singapore 629093, Telephone: (65) 861-1211 Fax: (65) 861-2967 Telex RS25117

SHENZHEN SULLAIR ASIA INTERNATIONAL CO., LTD., Zuo Pao Tai Road, Chiwan, Shekou, Shenzhen 518068, China, Telephone: (86) 755-6851686 Fax: (86) 755-6853473

SULLAIR TAIWAN LTD., 2nd Fl. No. 96, Chien Kuo N. Road, Taipei 104, Taiwan, Telephone: 886-2-505-7256, Fax: 886-2-505-5480

SULLAIR ARGENTINA, Goncalves Dias 1145, 1276 Buenos Aires, Argentina, Telephone: 541-303-0621, Fax: 541-303-0626

SSL-1168 Specifications subject to change without notice. © Copyright 2005 Sullair Corporation. All rights reserved. EA/09/05/2.5