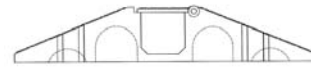


# YELLOW JACKET CLASSIC

## Components and Dimensions

### 1 Channel Systems



DESCRIPTION	MODEL #	Length (A)	Width (B)	Height (C)	Weight (lbs.)	Channels	
						Width (D)	Height (E)
Cable Protector	YJ1-300	36"	21"	4.00"	40	3.00"	3.00"
Cable Protector	YJ1-500	36"	27"	6.00"	90	5.00"	5.00"

### 2 Channel System



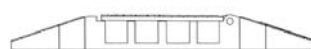
DESCRIPTION	MODEL #	Length (A)	Width (B)	Height (C)	Weight (lbs.)	Channels	
						Width (D)	Height (E)
Cable Protector	YJ2-400	36"	42"	5.0"	130	4.00"	4.00"

### 3 Channel Systems



DESCRIPTION	MODEL #	Length (A)	Width (B)	Height (C)	Weight (lbs.)	Channels	
						Width (D)	Height (E)
Cable Protector	YJ3-225	36"	20"	3.00"	32	2.25"	2.25"
End Boots (pair, M/F)	YJ3EB-225	6"	20"	3.00"	16	2.25"	2.25"
Left Turn	YJ3TL-225	25"	20"	3.00"	22	2.25"	2.25"
Right Turn	YJ3TR-225	25"	20"	3.00"	22	2.25"	2.25"
Cable Protector, Wide	YJ3-225W	36"	27"	3.00"	48	2.25"	2.25"

### 4 Channel Systems



DESCRIPTION	MODEL #	Length (A)	Width (B)	Height (C)	Weight (lbs.)	Channels	
						Width (D)	Height (E)
Cable Protector	YJ4-125	36.0"	18"	2.00"	26	1.25"	1.10"
End Boots (pair, M/F)	YJ4EB-125	6.0"	18"	2.00"	8	1.25"	1.10"
Left Turn	YJ4TL-125	25.0"	18"	2.00"	14	1.25"	1.10"
Right Turn	YJ4TR-125	25.0"	18"	2.00"	14	1.25"	1.10"
Cable Protector	YJ4-200	39.4"	22"	2.80"	42	2.00"	2.00"



**The Durable  
Cable Protector  
for High Speed,  
Heavy Volume  
Applications.**

**YELLOW JACKET**  
CABLE PROTECTORS

A Division of Peterson  
Systems International, Inc.

Tel 626.357.7051

Fax 626.303.3066

Email [sales@yjams.com](mailto:sales@yjams.com)

P.O. Box 1557  
2350 East Central Ave.  
Duarte, CA 91010-2984

[www.yjams.com](http://www.yjams.com)



**YELLOW JACKET**  
CABLE PROTECTORS

# YELLOW JACKET CLASSIC

**Extra Heavy Duty, Extra Long Life**

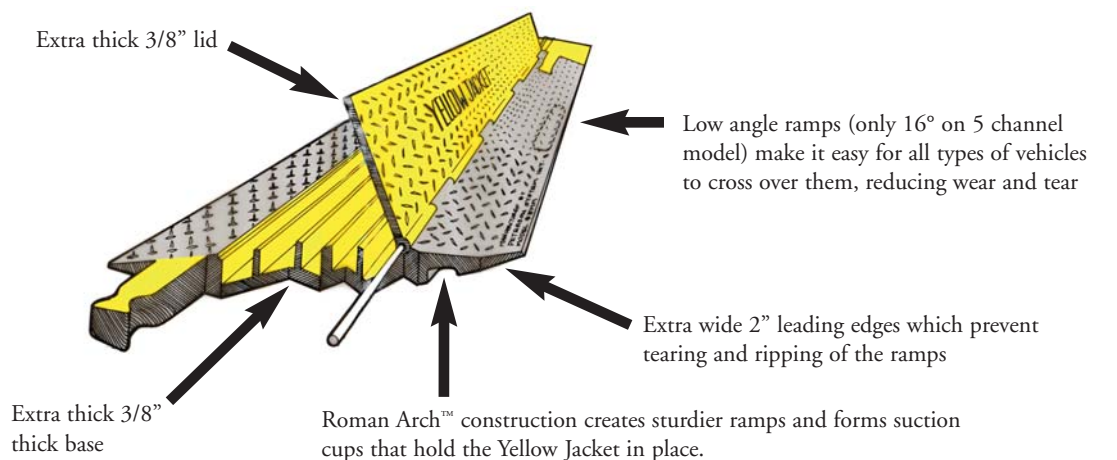


Yellow Jacket "Classic" is a single piece cable protector designed for extra heavy duty applications. It is built to withstand constant, high speed, heavy traffic from trucks, buses and other vehicles. Yellow Jacket Classic is "The Original and The Best" and outperforms all newcomers.

It is built with 30% more polyurethane than other 5-channel cable protectors that use a dog bone connector. This additional polyurethane keeps a Yellow Jacket in place and gives it higher load capacity, longer life and the ability to absorb abuse that would easily damage other cable protectors. Yellow Jacket's proven durability makes it the best value on the market.

### Superior Handling of Heavy, High Speed Vehicular Traffic

Vehicular traffic produces the greatest impact on a cable protector's leading edges and its ramps. Yellow Jacket's superior engineering and materials have been proven in over 20 years of demanding use, making them the most durable on the market. Yellow Jacket® cable protectors are able to absorb significantly more impact from vehicles due to the design of their ramps, which includes:



### Proven Durability in Over 20 Years of Use

20 year old Yellow Jackets are still in the field handling trucks, forklifts and other vehicles every day. This toughness is due to:

- Heavy weight construction – a 5 channel Yellow Jacket weighs 28 lbs. – 30% more than other 5 channel cable protectors that use a dog bone connector
- Made from Durathane® – a proprietary cast molded polyurethane with superior tear and abrasion resistance, and dynamic load bearing properties

### ADA Compatible Ramps

WASP® ADA compatible special access ramps are available.



**Uses the Original dog bone Connector\***

- Provides quick assembly and disassembly
- Resists breaking under pressure - will release before it breaks
- Most popular cable protector connector on the market

**Protect and Organize Cables, Lines and Hoses**

Yellow Jacket offers superior protection for electrical cables, hydraulic and pneumatic hoses and data, video and signal lines.

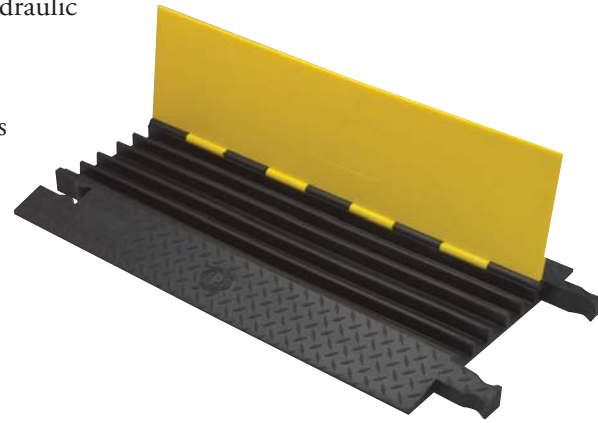
- Multi-channel design helps organize cables
- Rounded dividers protect cables from snags and tears

**Easy to Load**

- Yellow Jackets have top hinged lids for easy access

**Distinctive Highly Visible Yellow and Black**

- Yellow Jacket lids are made in high visibility yellow with contrasting black ramps



**Stays in Place**

While other cable protectors may shift under stress, Yellow Jackets will stay in place because of:

- Heavy weight construction - a 5 channel Yellow Jacket weighs 28 lbs.
- The Roman Arch™ in the ramp functions like a suction cup when a vehicle passes over a Yellow Jacket

**Safety Features**

- Skid resistant diamond pattern used on all upper surfaces
- Non-conductive, no metal parts

**Wide Variety of Configurations**

- 1-5 channel models available
- Channel sizes of 1 1/4" to 5"

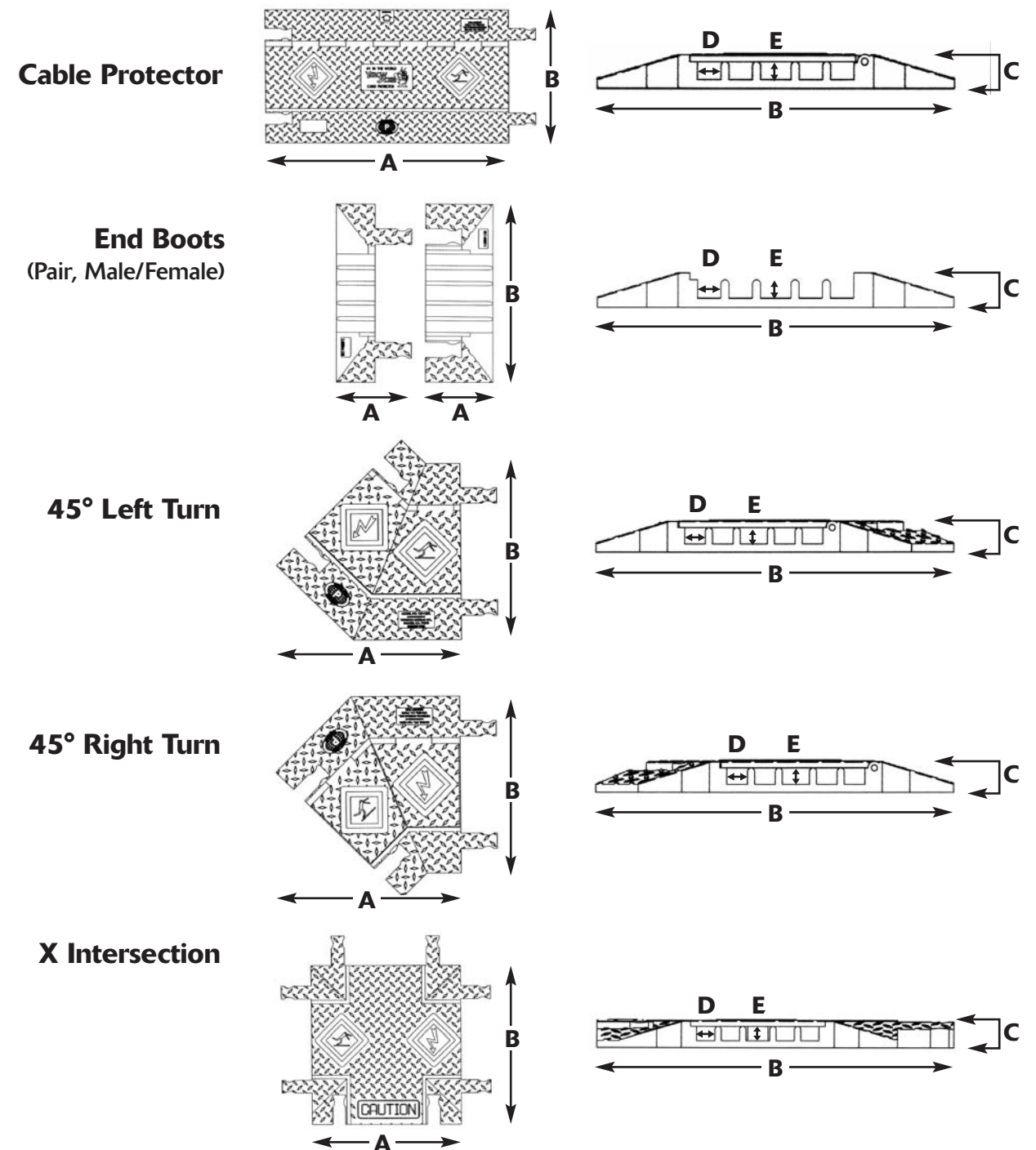
*“Yellow Jackets have paid for themselves ten times over in damaged cables, lost time and liability reduction.”*

**Cole Evangelista**  
Chief Electrician  
America West Arena

*“We put Yellow Jacket products to the test every day – in the studio and on location.”*

**Richard Glaser**  
Department Manager, Set Lighting  
Sony Pictures Studios

**YJ5-125 Cable Protector and Accessories**



*YJ5-125 cable protectors and accessories used as exemplary representations. Drawings are representational and are not necessarily to scale.*

**5 Channel System**

DESCRIPTION	MODEL #	Length (A)	Width (B)	Height (C)	Weight (lbs.)	Channels Width (D)	Height (E)
Cable Protector	YJ5-125	36"	20"	2.00"	28	1.25"	1.10"
End Boots (pair, M/F)	YJ5EB-125	6"	20"	2.00"	8	1.25"	1.10"
Left Turn	YJ5TL-125	25"	20"	2.00"	15	1.25"	1.10"
Right Turn	YJ5TR-125	25"	20"	2.00"	15	1.25"	1.10"
X Intersection	YJ5X-125	19"	20"	2.00"	16	1.25"	1.10"

\* dog bone connector was designed by Yellow Jacket, Inc's parent corporation and is licensed to other manufacturers.