



Model 944E-42 TELEHANDLER

Performance

| | |
|---|---|
| Rated Capacity | 9,000 lb (4,082 kg) |
| Maximum Lift Height | 42 ft (12.8 m) |
| Frame Leveling | 12 degrees |
| Lift Speed (boom retracted, no load) | Up: 16 sec Down: 13 sec |
| Boom Speed (no load) | Extend: 13 sec Retract: 13 sec |
| Travel Speed Forward | 20 mph (32 kmph) max. |
| Drawbar Pull (loaded) | 24,350 lb (11,045 kg) in first gear |
| Operating Weight | With 48 in. Carriage and Forks 27,265 lb (12,367 kg) |
| Forward Reach | 35 ft 6 in. (10.8 m) |
| Horizontal Load Placement Distance | 80 in. (2.0 m) |

Standard Specifications

| | |
|--|--|
| Engine | |
| Make and Model | Cummins QSB4.5T Turbo |
| Fuel | Diesel |
| Cycles | 4 |
| No. of Cylinders | 4 |
| Displacement | 276 cu in (4.5 L) |
| Torque Rating | 305 lb ft (414 Nm) @ 1,500 rpm |
| Rated Speed | 2,500 rpm |
| Max. Gross BHP | 110 hp (82 kW) |
| Fuel Tank | 46 gal (174 L) |
| Engine Block Heater | |
| Engine Grid Heat System | |
| Engine Filters | |
| Two-stage centrifugal air cleaner. | |
| Serviceable fuel filter/water separator. | |
| Full-flow replaceable-element engine oil filter. | |
| Electrical System | |
| Voltage | 12V |
| Alternator | 65 amp |
| Battery | Two batteries, each with 850 cold cranking amps at 0°F |

Transmission

Modulated powershift with integral full gear-drive dropbox.
4-speed forward and 3-speed reverse.

Axles

Full-time planetary 4-wheel drive.
Limited slip front differential.
Stabil-Trak rear axle stability system.

Brakes

Inboard mounted internal wet disc brakes.

Parking Brakes

Spring applied, hydraulically released parking brake with transmission declutch feature.

Tires

Standard Air-filled 15:50 x 25—12 ply

Fenders

Cab

Certified ROPS/FOPS structure.
Steering wheel mounted horn and back-up alarm.
Rear view mirrors.

Steering

4-wheel circle, 4-wheel crab, 2-wheel front.

Instruments

Hydraulic oil temperature, fuel level, tachometer, and hourmeter gauges.
Warning indicators for transmission oil temperature, hydraulic oil temperature, engine oil pressure, alternator charging, air filter restriction, hydraulic oil filter restriction, and low brake pressure.
Indicators for parking brake and Stabil-Trak system.

Controls

Multi-function, fully proportional pilot operated joystick controls for boom functions, carriage tilt, auxiliary control, frame leveling, and horizontal load placement system.

Hydraulic System

Load sensing dual gear pumps.
33.5 gal (127 L) system capacity.

Auxiliary Hydraulics

Used for all attachments equipped with cylinders or other hydraulic components. Consists of valves, controls and hydraulic lines.

Accessories & Options

Cab Enclosure

Road and Work Lights

Work Lights

Air Conditioning

Tire Options

Foam-filled
Rock

Attachments

Standard Carriage

48 in. (1.2 m), 50 in. (1.3 m),
60 in. (1.5 m) or 72 in. (1.8 m)

± 10° Side Tilt Carriage

48 in. (1.2 m), 50 in. (1.3 m),
60 in. (1.5 m) or 72 in. (1.8 m)

± 45° Swing Carriage

72 in. (1.8 m)

Pallet Forks

2.36 x 4 x 48 in.
(60 mm x 102 mm x 1.2 m)

Lumber Forks

1.75 x 7 x 60 in.
(45 mm x 178 mm x 1.5 m)

Block Forks

2 x 2 x 48 in.
(51 mm x 51 mm x 1.2 m)

Truss Boom With or Without Winch

10 ft (3.0 m)

Truss Boom With Winch

3 ft (0.91 m)

Light Material Bucket

1.25 cu yd (0.95 m³) capacity
96 in. (244 cm) width

Sheet Material Handler

Hydraulic Fork Position Carriages

50 in. (1.27 m)
Single and dual fork options

Fork Mounted Work Platform

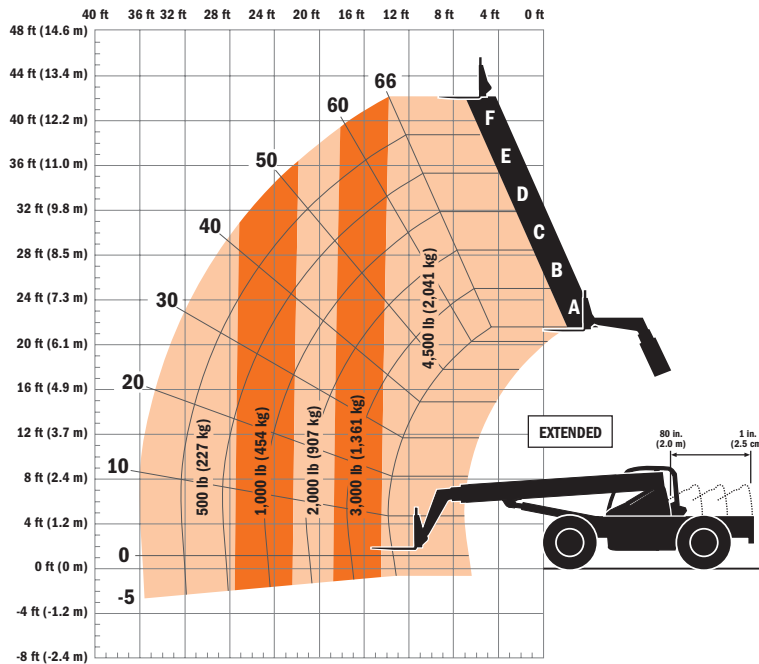
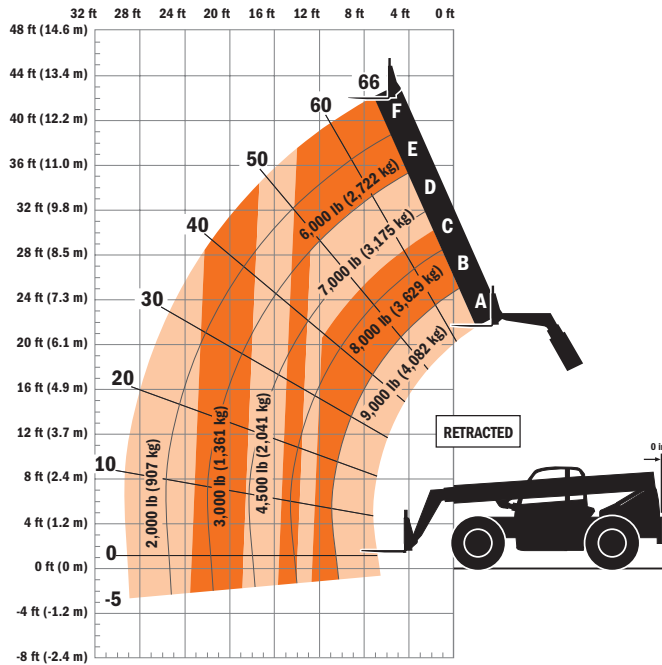
Crane Hook



Model 944E-42 TELEHANDLER

Dimensions

| | |
|---|--------------------------|
| Length (less forks) | 253 in. (6.43 m) |
| Width | 101 in. (2.56 m) |
| Height | 95.5 in. (2.42 m) |
| Wheelbase | 131 in. (3.33 m) |
| Ground Clearance | 16 in. (406 mm) |
| Outside Turning Radius | 147 in. (3.73 m) |
| Max. Reach from Front Tires to 24 in. (609 mm) Load Center | 35 ft 6 in. (10.82 m) |



IMPORTANT

Rated lift capacities shown are with machine equipped with carriage and pallet forks. The machine must be level on a firm surface with undamaged, properly inflated tires. Machine specifications and stability are based on rated lift capacities at specific boom angles and boom lengths. (If specifications are critical, the proposed application should be discussed with your dealer.)

DO NOT exceed rated lift capacity loads, as unstable and dangerous machine conditions will result.

DO NOT tip the machine forward to determine the allowable load.

Use only JLG approved attachments with proper material handler model/attachment load capacity charts displayed in the operator's cab. OSHA requires all rough terrain forklift operators be trained according to OSHA 29 CFR 1910.178 (1).



Due to continuous product improvements, JLG Industries reserves the right to make specification and/or equipment changes without prior notification. This machine meets or exceeds ASME B56.6-1998 as originally manufactured for intended applications.

Form No.: SS-L944E-42-0104-15M
Part No.: 3132501
R020702
Printed in USA

JLG Industries, Inc.

An Oshkosh Truck Corporation Company
1 JLG Drive
McCconnellsburg, PA 17233-9533
Telephone 717-485-5161
Toll-free in US 877-JLG-LIFT
Fax 717-485-6417
www.jlg.com