





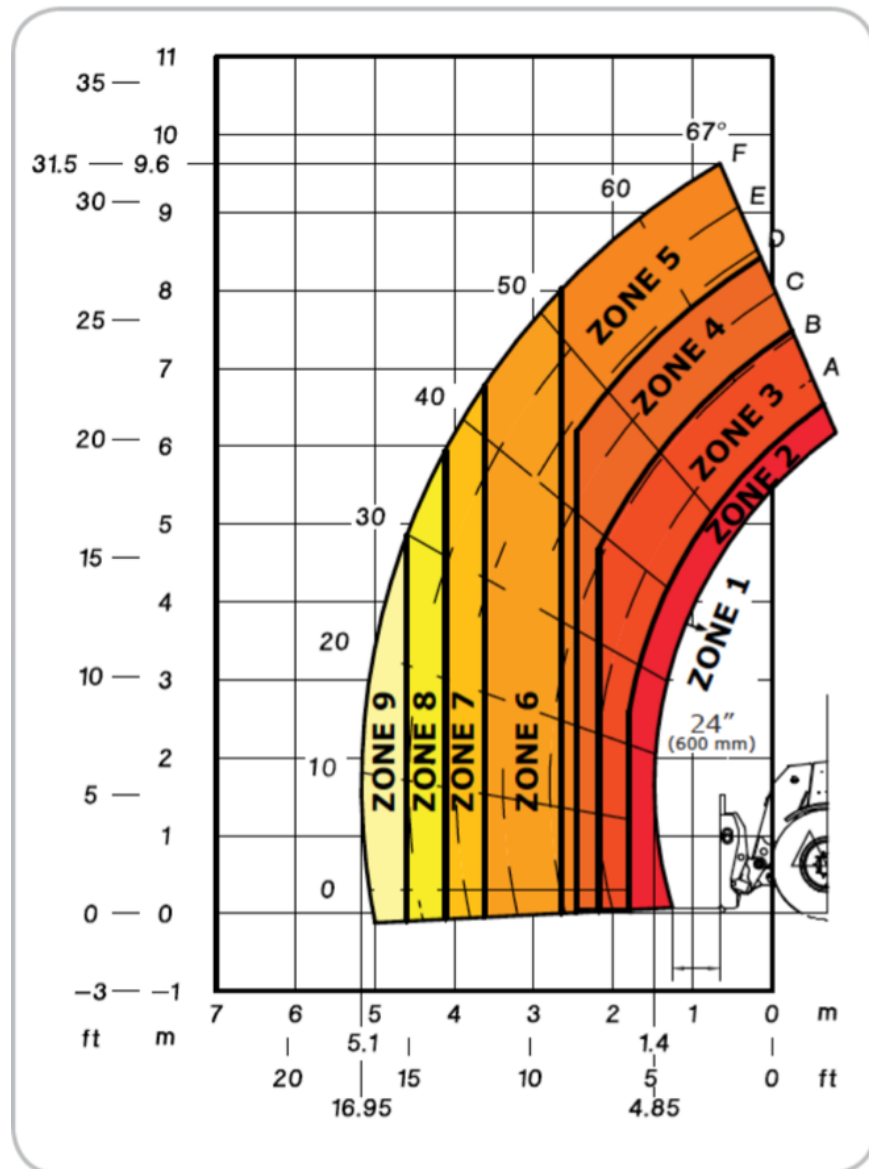


|  |                                   |  |
|--|-----------------------------------|--|
|  CAPACITIES               | Lift Capacity with Forks (kg)     | 28,000 lbs. (13000)                        |
|  | Max. Lift Height (m)              | 31'6" (9.62)                               |
|  | Capacity at Max. Lift Height (kg) | 16,500 lbs. (7500)                         |
|  | Max. Forward Reach (m)            | 16'11.5" (5.17)                            |
|  | Cap. at Max. Forward Reach (kg)   | 5,500 lbs. (2500)                          |
|  ENGINE                   | Manufacturer                      | Mercedes-Benz                              |
|  | Power (kW)                        | 176 hp (129) Tier IV                       |
|  | Aspiration                        | Diesel Turbocharged                        |
|  | Model                             | OM 934 LA E4-3                             |
|  | Torque (Nm) @ rpm                 | 553 ft.-lbs. (750) @ 1200-1600             |
|  COMPONENTS               | Transmission                      | Hydrostatic Transmission                   |
|  | Max Travel Speed (km/hr)          | 19.3 mph (31)                              |
|  | Drive                             | 4-Wheel                                    |
|  | Selective Steering                | 2-Wheel, 4-Wheel, Crab                     |
|  | Service Brake                     | Multi-Disc Brakes and Front and Rear Axles |
|  | Parking Brake                     | Hydraulic Front Axle                       |
|  | Axle Manufacturer                 | DANA                                       |
|  HYDRAULIC SYSTEM       | Pump Type                         | Piston Pump                                |
|  | Total Capacity (L/min)            | 47.5 gpm (180)                             |
|  | System Pressure (bar)             | 4350 psi (300)                             |
|  GENERAL SPECIFICATIONS | Approximate Weight (kg)           | 40,763 lbs. (18490)                        |
|  | Length - Less Forks (m)           | 20'2" (6.14)                               |
|  | Width (m)                         | 8'3" (2.51)                                |
|  | Ground Clearance (m)              | 17" (0.44)                                 |
|  | Wheelbase (m)                     | 11'1" (3.37)                               |
|  | Turning Radius -Outside Tire (m)  | 17'6" (5.34)                               |
|  | Overall Height (m)                | 9'10" (3.0)                                |
|  | Frame Leveling                    | +/- 10°                                    |
|  | Standard Tires                    | Aeolus 17.5 x 25                           |
|  | Drawbar Pull (daN)                | 24,279 lbf. (10800)                        |
|  FLUID CAPACITIES       | Hydraulic Oil (L)                 | 76.6 gal. (290)                            |
|  | Fuel Tank (L)                     | 83 gal. (315)                              |
|  | DEF Tank (L)                      | 16.6 gal. (63)                             |

# LOAD CHART



## MHT 10130 Load Zones:

- |                                  |                                 |
|----------------------------------|---------------------------------|
| <b>1.</b> 28,000 lbs. (13000 kg) | <b>6.</b> 12,100 lbs. (5500 kg) |
| <b>2.</b> 26,450 lbs. (12000 kg) | <b>7.</b> 9,900 lbs. (4500 kg)  |
| <b>3.</b> 22,000 lbs. (10000 kg) | <b>8.</b> 7,700 lbs. (3500 kg)  |
| <b>4.</b> 18,800 lbs. (8500 kg)  | <b>9.</b> 5,500 lbs. (2500 kg)  |
| <b>5.</b> 16,500 lbs. (7500 kg)  |                                 |