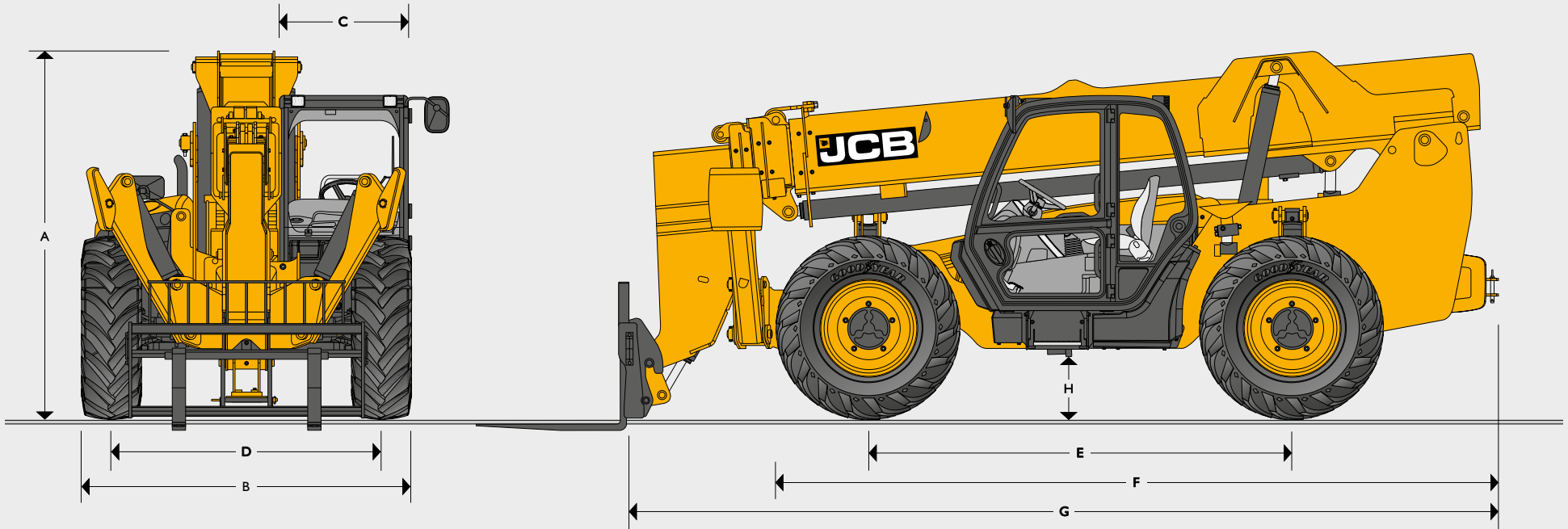
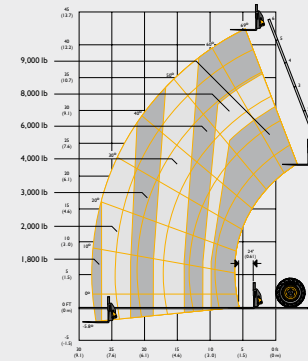
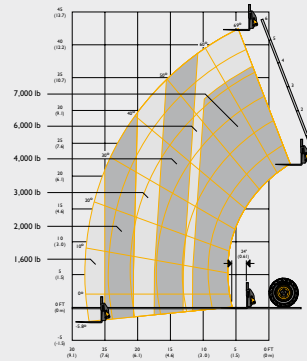
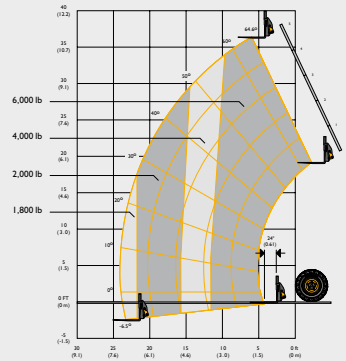


STATIC DIMENSIONS

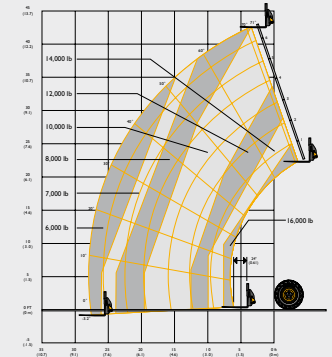
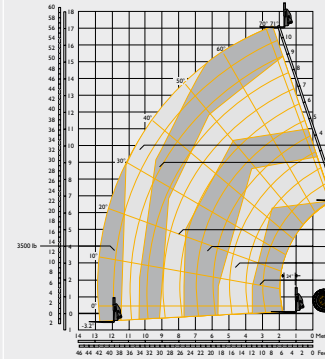
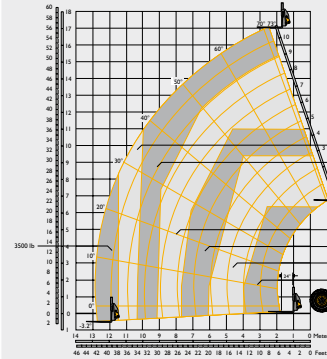
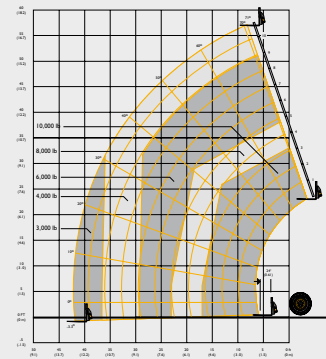


| Machine model | | 506-36 | 507-42 | 509-42 | 510-56 | 512-56 | 514-56 | 516-42 |
|------------------------------------|------------|--------------|--------------|---------------|---------------|---------------|---------------|---------------|
| A Overall height | ft-in (mm) | 8-3 (2510) | 8-3 (2525) | 8-3 (2525) | 8-10 (2692) | 8-10 (2692) | 8-11 (2716) | 8-11 (2716) |
| B Overall width (over tyres) | ft-in (mm) | 7-10 (2388) | 7-10 (2388) | 7-10 (2388) | 8-1 (2471) | 8-1 (2471) | 8-1 (2475) | 8-1 (2475) |
| C Inside width of cab | ft-in (mm) | 3-1 (940) | 3-1 (940) | 3-1 (940) | 3-1 (940) | 3-1 (940) | 3-1 (940) | 3-1 (940) |
| D Front track | ft-in (mm) | 6-4 (1936) | 6-7 (2008) | 6-7 (2008) | 6-7 (2008) | 6-7 (2008) | 6-7 (2008) | 6-7 (2008) |
| E Wheelbase | ft-in (mm) | 10-4 (3150) | 10-4 (3150) | 10-4 (3150) | 10-4 (3150) | 10-4 (3150) | 10-4 (3150) | 10-4 (3150) |
| F Overall length to front tyres | ft-in (mm) | 17-1 (5211) | 17-8 (5386) | 17-0 (5183) | 17-9 (5406) | 17-9 (5406) | 18-4 (5596) | 18-4 (5596) |
| G Overall length to front carriage | ft-in (mm) | 19-5 (5918) | 21-3 (6477) | 20-7 (6274) | 21-7 (6579) | 21-7 (6579) | 22-4 (6815) | 22-4 (6,815) |
| H Ground clearance | ft-in (mm) | 1-3½ (396) | 1-3½ (396) | 1-3½ (396) | 1-5½ (444) | 1-5½ (444) | 1-5½ (444) | 1-5½ (444) |
| Outside turn radius (over tyres) | ft-in (mm) | 14-6 (4420) | 13-9 (4191) | 13-9 (4191) | 14-1 (4293) | 14-1 (4293) | 14-4 (4365) | 14-4 (4,365) |
| Weight | lb (kg) | 20270 (9193) | 21300 (9660) | 22430 (10172) | 29900 (13560) | 30635 (13895) | 32143 (14580) | 32055 (14540) |
| Tires | | 13.00-24 | 14.00-24 | 14.00-24 | 17.5-25 | 17.5-25 | 17.5-25 | 17.5-25 |

LIFT PERFORMANCE



| Machine model | | 506-36 | 507-42 | 509-42 |
|---|------------|--------------|--------------|--------------|
| Lift height | ft-in (mm) | 36-4 (11070) | 42-0 (12800) | 42-0 (12800) |
| Maximum lift capacity | lb (kg) | 6000 (2722) | 7000 (3175) | 9000 (4084) |
| Lift capacity to full height (on tires) | lb (kg) | 6000 (2722) | 6000 (2722) | 6000 (2722) |
| Lift capacity at full reach | lb (kg) | 1800 (816) | 1600 (725) | 1800 (816) |
| Reach at maximum lift height | ft-in (mm) | 6-4 (1930) | 4-11 (1500) | 4-11 (1500) |
| Maximum forward reach | ft-in (mm) | 24-0 (7310) | 28-0 (8530) | 28-0 (8530) |
| Frame sway left or right | degrees | 10 | 10 | 10 |



Lift data provisional.

| Machine model | | 510-56 | 512-56 | 514-56 | 516-42 |
|---|------------|--------------|--------------|--------------|--------------|
| Lift height | ft-in (mm) | 56-0 (17070) | 56-0 (17070) | 56-0 (17070) | 42-0 (12800) |
| Maximum lift capacity | lb (kg) | 10000 (4537) | 12000 (5444) | 14000 (6350) | 16000 (7257) |
| Lift capacity to full height (on tires) | lb (kg) | 3000 (1361) | 4000 (1814) | 4000 (1814) | 6000 (2721) |
| Lift capacity to full height (on stabilizers) | lb (kg) | 4000 (1814) | 5000 (2268) | 5000 (2268) | 10000 (4537) |
| Lift capacity at full reach (on tires) | lb (kg) | 300 (136) | 300 (136) | 500 (227) | 2000 (907) |
| Lift capacity at full reach (on stabilizers) | lb (kg) | 3000 (1360) | 3500 (1587) | 3500 (1587) | 5000 (2267) |
| Reach at maximum lift height | ft-in (mm) | 8-2 (2490) | 8-2 (2490) | 8-2 (2490) | 4-11 (1500) |
| Maximum forward reach | ft-in (mm) | 42-0 (12800) | 42-0 (12800) | 42-0 (12800) | 28-0 (8530) |
| Frame sway left or right | degrees | 10 | 10 | 10 | 10 |

| ENGINE | | | |
|------------------|---------|--------------------------|--|
| Machine model | | 506-36 / 507-42 / 509-42 | 509-42 / 510-56 / 512-56 / 514-56 / 516-42 |
| Emissions level | | Stage IV / Tier 4 | Stage IV / Tier 4 |
| Manufacturer | | JCB | JCB |
| Displacement | ltr | 4.4 | 4.4 / 4.8 |
| No. of cylinders | | 4 | 4 |
| Bore size | in (mm) | 4.05" (103) | 4.05" (103) |
| Stroke | in (mm) | 5.0" (132) | 5.0" (132) |
| Aspiration | | Turbocharged cooled | Turbocharged cooled & Intercooler |
| Power rating | | | |
| Power @ 2200rpm | hp (kW) | 74 (55) | 109 (81) |
| Torque rating | | | |
| Torque @ 1300rpm | Nm | 400 | 512 |
| After treatment | | N/A | SCR & DEF |

| SERVICE CAPACITIES | | | |
|--------------------|-----------------|--|--------------|
| Hydraulic tank | gallon (litres) | | 35 (132) |
| Coolant | gallon (litres) | | 6 (23) |
| Engine oil sump | gallon (litres) | | 3.6 (14) |
| Fuel tank | gallon (litres) | | 33.3 (126.3) |
| DEF tank (Adblue) | gallon (litres) | | 4.5 (17.3) |

| CYCLE TIMES | | | | | | | | | |
|--------------------------------------|---------|--------|--------|--------|--------|--------|--------|--------|--|
| Machine model | | 506-36 | 507-42 | 509-42 | 510-56 | 512-56 | 514-56 | 516-42 | |
| Lift | Seconds | 11.2 | 11.7 | 13.8 | 18 | 18 | 16.8 | 16.4 | |
| Lower | Seconds | 7.3 | 7.6 | 9.2 | 12.4 | 12.4 | 15.5 | 14.7 | |
| Extend | Seconds | 8.5 | 9.7 | 9.7 | 24.2 | 24.2 | 22.7 | 13.6 | |
| Retract | Seconds | 9.9 | 10.6 | 10.6 | 16.4 | 16.4 | 16.4 | 14.7 | |
| Bucket dump | Seconds | 4 | 4 | 4 | 6.4 | 6.4 | 6.4 | 4.3 | |
| Bucket crowd | Seconds | 3 | 3 | 3 | 3.7 | 3.7 | 4.5 | 4.2 | |
| Stabilizer down | Seconds | N/A | N/A | N/A | 5.5 | 5.5 | 5.5 | 5.5 | |
| Stabilizer up | Seconds | N/A | N/A | N/A | 4 | 4 | 4 | 4 | |
| Rear Axle Stabilization (RAS) System | Seconds | No | Yes | Yes | Yes | Yes | Yes | Yes | |

| HYDRAULICS | | |
|--|--|------------|
| Two stage gear pump with suction strainer and filter | | |
| Operating system pressure bar | psi (bar) | 3770 (260) |
| Main hydraulics l/min | gal/min (l/min) | 29 (110) |
| TRANSMISSION | JCB powershift transmission incorporating torque converter, bevel box and a 4 speed powershift gearbox in one resiliently mounted unit. Front and rear drive axles: JCB epicyclic hub reduction drive/steer axles with Max-Trac torque proportioning differentials. Travel speed: 15.5mph (25kph). | |
| BRAKES | Service brakes: Hydraulically activated, self-adjusting, oil-immersed in-board high back-off multi-disc type on front axle. Parking brake: Hand-operated disc brake on output of gearbox (55kW/74hp 81kW/109hp) – oil immersed disc type). | |
| BOOM AND CARRIAGE | Boom is manufactured from high tensile steel. JCB self-levelling carriage pallet forks and a wide range of attachments. | |
| ELECTRICS | 12v negative earth. 95 AH battery. 95 amp alternator. Full road lighting. Reversing light. Direction indicators. | |
| STEERING | Hydrostatic power steering with power track rods on both axles. Three steer mode options: front wheel steer; all wheel steer; crab steer: operated from in the cab by a selection lever. | |
| CAB | Quiet, safe and comfortable cab conforms to ROPS ISO 3471 and FOPS ISO 3449. Tinted glass all round with laminated front and roof screen. Roof bars, front, rear and roof screen wash/wipe and heater/screen demister. Audio-visual warning system for coolant temperature, water in fuel, engine oil pressure, air cleaner, battery charge, transmission oil temperature and pressure. Hour meter and road speed indicator. Engine temperature, fuel gauge and clock. Adjustable steering column with stalk bar powershift change and forward reverse shuttle. Throttle and brake pedal floor mounted. Adjustable suspension seat with adjacent park brake. | |
| OPTIONS AND ACCESSORIES | Front and rear working lights, rotating flashing beacon, fire extinguisher, radial industrial tyres, windscreen and roof guard, radio kit, air conditioning, carriage options available – contact your local dealer. | |

ENERGY MASTER SPECIFICATION

| Machine model | 506-36 | 507-42 | 509-42 | 510-56 | 512-56 | 514-56 | 516-42 |
|---|--------|--------|--------|--------|--------|--------|--------|
| LED boom work lights (boom) | N/A | N/A | ● | ● | ● | ● | ● |
| LED work lights (front and rear) | N/A | N/A | ● | ● | ● | ● | ● |
| LED work lights (peripheral) | N/A | N/A | ● | ● | ● | ● | ● |
| Single lever joystick | N/A | N/A | ● | ● | ● | ● | ● |
| Fire extinguishers internal and external | N/A | N/A | ● | ● | ● | ● | ● |
| Boom retract ARV | N/A | N/A | ● | ● | ● | ● | ● |
| Auxiliary venting | N/A | N/A | ● | ● | ● | ● | ● |
| Steel lower door | N/A | N/A | ● | ● | ● | ● | ● |
| Solideal 14-24 solid fill | N/A | N/A | ● | ● | ● | ● | ● |
| Mechanical tow hitch 6000 lbs | N/A | N/A | ● | ● | ● | ● | ● |
| Boom sky hook | N/A | N/A | ● | ● | ● | ● | ● |
| Mesh side screen (canopy cab option only) | N/A | N/A | ○ | ○ | ○ | ○ | ○ |
| Energy Master branding decal | N/A | N/A | ● | ● | ● | ● | ● |
| Beacon strobe light | N/A | N/A | ● | ● | ● | ● | ● |

● Standard

○ Option