

1850SJ

ULTRA SERIES BOOM LIFT



Performance

Platform Height	185 ft 7 in.	56.56 m
Horizontal Outreach	80 ft	24.38 m
Below Ground Reach	4 ft 10 in.	1.47 m
Swing	360° Continuous	
Platform Capacity-Restricted	1,000 lb	454 kg
Platform Capacity-Unrestricted	500 lb	227 kg
Platform Rotator	173° Hydraulic	
Jib Length	13–20 ft	3.96–6.1 m
Jib Range of Articulation	120° (+75, -45)	
Weight ¹	60,300 lb	27,352 kg
Max. Ground Bearing Pressure	119.6 psi	8.41 kg/cm ²
Drive Speed	2.8 mph	4.5 km/h
Gradeability	40%	
Turning Radius (Inside)		
Axles Retracted	23 ft 4 in.	7.12 m
Axles Extended	7 ft 7 in.	2.3 m
Turning Radius (Outside)		
Axles Retracted	31 ft 3 in.	9.52 m
Axles Extended	21 ft 8 in.	6.6 m

1. Certain options or country standards increase weight.

Standard Specifications

Power Source

Diesel Engine		
Deutz TD 3.6L	99.8 hp	74.4 kW
Fuel Tank Capacity	52.8 gal	200 L

Hydraulic System

• Hydraulic Tank Capacity	75.1 gal	284.2 L
---------------------------	----------	---------

Tires

• Standard	445/50D710 24 ply Foam-Filled
------------	-------------------------------

Standard Features

- Platform 36 x 96 in. (.91 x 2.44 m) Side Entry
- Selectable Capacity Envelope
- Drive-Out Extendable Axles
- 180° Hydraulic Platform Rotator
- AC Receptacle in Platform
- Tilt Light and Alarm
- Swing-Out Engine Tray
- 12V-DC Auxiliary Power
- Hourmeter
- Control ADE® System
- Full-Time 4WD
- 3 Selectable Steering Modes
- Proportional Controls
- Gull-Wing Steel Hoods
- 445/50D710 Foam-Filled Rim Protector Lug Tread Tires
- Platform Console Machine Status Light Panel*
- Lifting/Tie Down Lugs
- Engine Distress Warning/Shutdown—Selectable via JLG Analyzer
- All Motion Alarm
- Glow Plugs
- LCD Panel at Operator's Platform Control Console

* Provides indicator lights at platform control console for system distress, fuel level, low fuel, 5 degree tilt light, and foot switch status.



- **Heightened Productivity**— The 1850SJ is much faster to full height, so operators can spend more time working and less time positioning the boom. The axles take approximately one minute to extend or retract. They're able to pivot in and out and do not telescope like extendable axles on other Ultra Series boom lifts.
- **Greater Work Envelope**— Telescoping jib and five section boom provides over 2.9 million cubic feet of work area and greater ability to reach up and over. An LCD screen shows operators where they are in the work envelope along with other useful information.
- **More Capacity**— Featuring dual 1,000 lb/500 lb, the 1850SJ is the most powerful boom in the industry. Plus, the operator can move just the jib, rather than the whole boom, for greater maneuverability and more precise positioning.
- **Ease of Transport**— No oversized load permit needed (over weight permit is required for highway transportation).

Accessories & Options

- 36 x 72 in. (.91 x 1.83 m) Platform
- Inward Self-Closing Swing Gate
- Fall Arrest Platform 36 x 96 in. (.91 x 2.44 m) Rear Entry
- Mesh to Top Rail-Bolt-on Aluminum 6 ft
- Mesh to Top Rail-Bolt-on Aluminum 8 ft
- Light Package¹
- Soft Touch System
- Cold Weather Start Kit²
- Hostile Environment Kit³
- Flashing Amber Beacon
- Cold Package Plus⁴
- 52.8 gal. (200 L) Fuel Tank⁵
- Tool Tray
- Special Hydraulic Oils

1. Includes platform mounted worklights and drive/backup lights.

2. Includes battery heater and oil tank heater.

3. Includes console cover, boom wipers and cylinder bellows.

4. Includes extreme cold engine oil, fuel conditioner, engine block heater, battery blanket, glow plugs, hydraulic tank heater, and oversized footswitch. Arctic hydraulic oil priced separately.

Power Source

Auxiliary Power	12 Volts DC
Capacity - Fuel Tank	53 gal. / 199.87 L
Engine Type - Diesel	Deutz TD3.6L 99.8 HP

Performance

Drive Speed - 4WD	3 mph / 4.51 km/h
Gradeability - 4WD	40 %
Platform Capacity - Restricted	1000 lb / 453.59 kg
Platform Capacity - Unrestricted	500 lb / 226.80 kg
Swing	360 Degrees
Swing Type	Continuous
Turning Radius - Outside (axles extended)	21 ft 8 in. / 6.6 m
Turning Radius - Outside (axles retracted)	31 ft 3 in. / 9.52 m

Dimensional Data

Ground Clearance	1 ft 4 in. / 0.41 m
Machine Height	10 ft / 3.05 m
Machine Length	63 ft 10 in. / 19.44 m
Machine Length - Transport	47 ft 10 in. / 14.57 m
Machine Width	8 ft 2 in. / 2.49 m
Machine Width - Axles Extended	16 ft 6 in. / 5.03 m
Platform Dimension A	3 ft / 0.91 m
Platform Dimension B	8 ft / 2.44 m
Platform Height	185 ft 7 in. / 56.57 m
Tailswing	7 ft 7 in. / 2.31 m
Tire Size	445/50D710 Foam Filled

Reach Specifications

Horizontal Outreach	80 ft / 24.38 m
Platform Height	185 ft 7 in. / 56.57 m
Vertical Jib Rotation	120 Degrees

General

Capacity - Hydraulic Reservoir	75 gal. / 284.28 L
Ground Bearing Pressure	120 psi / 8.38 Kg/cm ²
Machine Weight	60300 lb / 27351.62 kg

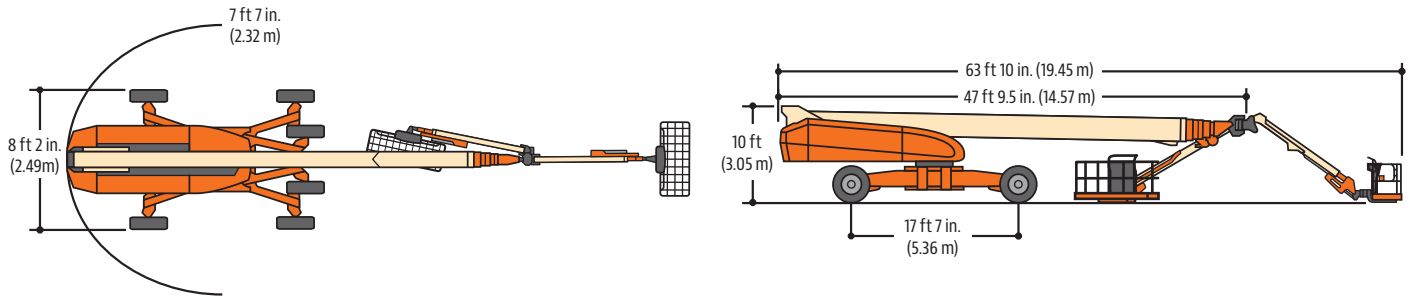
1850SJ

ULTRA SERIES BOOM LIFT

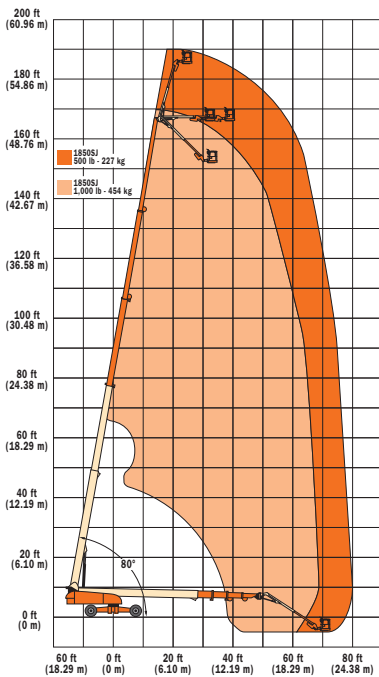


Dimensions

All dimensions are approximate.



1850SJ



The JLG "1 & 5" Warranty

JLG Industries, Inc. backs its products with its exclusive "1 & 5" Warranty. We provide coverage on all products for one (1) full year, and cover all specified major structural components for five (5) years. Due to continuous product improvements, we reserve the right to make specification and/or equipment changes without prior notification. This machine meets or exceeds applicable OSHA Regulations in 29 CFR 1910.67, 29 CFR 1926.453, ANSI A92.5-2006, and CSA Standard CAN3-B354.2-M82, as originally manufactured for intended applications.

Form No.: SS-450A-0107-10M
Part No.: 3131030
Printed in USA



JLG Industries, Inc.

1 JLG Drive
McConnellsburg, PA 17233-9533
Telephone 717-485-5161
Toll-free in US 877-JLG-LIFT
Fax 717-485-6417

www.jlg.com

An Oshkosh Corporation Company